



## 835C-L Series RF Driver



4919

The 835C series drivers are designed to operate with Isomet 200MHz AO modulators and frequency shifters for the proportional (analog) control of laser beam intensity.

These RF drivers include a crystal oscillator, a wideband balanced diode ring mixer and RF power amplifier. The mixer is used to vary the amplitude of the RF carrier according to the modulation input signal. The resulting AM signal is subsequently amplified by a Class A MOSFET amplifier.

Efficient heat transfer from the driver is required. The mounting surface must be attached to an external heat sink capable of dissipating 8W.

### SPECIFICATIONS

Output load impedance:	50 $\Omega$ Nominal
Load Mismatch VSWR:	2:1 Max
RF On-Off Ratio:	>40dB
Analogue Input:	0 - 1V * for 100% depth of modulation 50 ohm input impedance
Frequency Accuracy:	$\pm 25$ ppm
Frequency Stability:	$\pm 25$ ppm
Harmonics at 1W:	<25dBc
DC Power Input:	+12Vdc regulated to $\pm 1\%$ , < 500mA
Temperature Range:	-40°C to 70°C ambient, temperature at mounting face must not exceed 70°C.
Mounting Orientation:	Any Ensure driver is mounted on a suitable heatsink

### PERFORMANCE

Model	Centre Frequency	Minimum Rise/Fall Time	RF Drive Power	Supply
835C-L	200MHz	6nsec	>1.0 W >1.4 W	+12V dc +15V dc

#### ALL SPECIFICATIONS SUBJECT TO CHANGE WITHOUT NOTICE

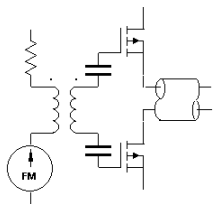
ISOMET CORP, 5263 Port Royal Rd, Springfield, VA 22151, USA.

Tel: (703) 321 8301 Fax: (703) 321 8546

E-mail: [ISOMET@ISOMET.COM](mailto:ISOMET@ISOMET.COM) Web Page: [WWW.ISOMET.COM](http://WWW.ISOMET.COM)

#### Quality Assured.

In-house: RF & Digital design  
Software Development  
OEM manufacture



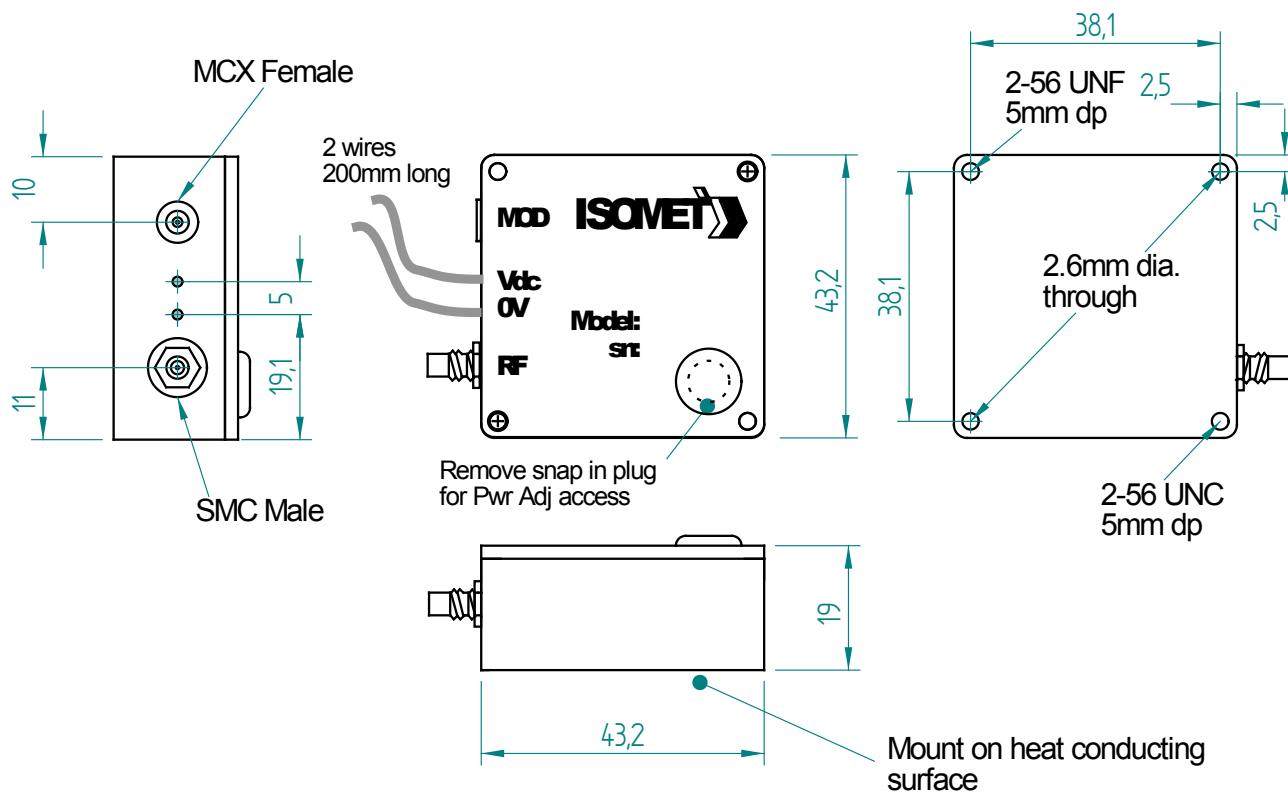
# 835C-L Series RF Driver



4919

## OUTLINE DRAWING

Dimensions: mm



### \* Options

### Add Suffix

0-5V modulation	:	'-V'
0-10V modulation	:	'-X'

ALL SPECIFICATIONS SUBJECT TO CHANGE WITHOUT NOTICE

ISOMET CORP, 5263 Port Royal Rd, Springfield, VA 22151, USA.

Tel: (703) 321 8301 Fax: (703) 321 8546

E-mail: [ISOMET@ISOMET.COM](mailto:ISOMET@ISOMET.COM) Web Page: [WWW.ISOMET.COM](http://WWW.ISOMET.COM)

Quality Assured.

In-house: RF & Digital design

Software Development

OEM manufacture